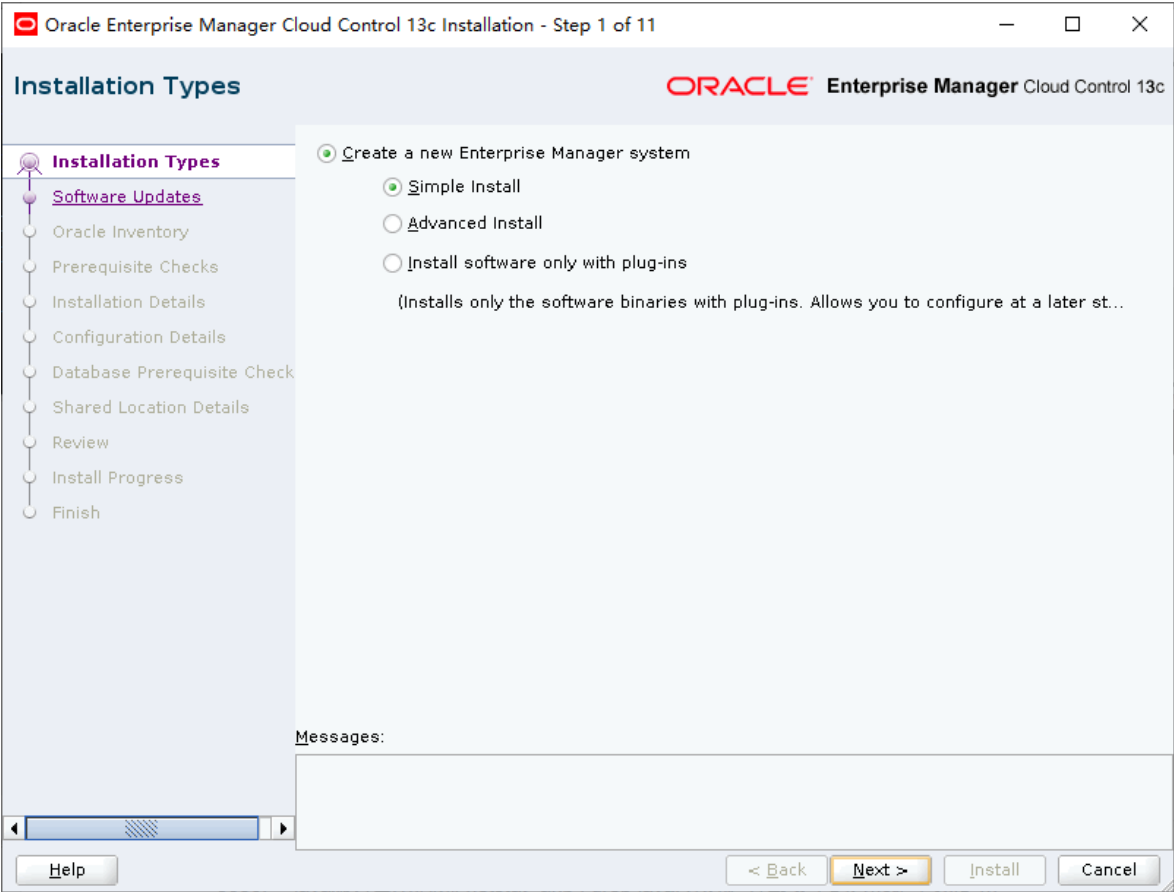


em13c安装遇到的问题（未解决）

2023年12月15日 15:30

： 在新机器上安装em13c
思路：
使用虚拟机克隆一台已安装gi与oracle 数据库的机器，在此机器上女装en13c
结果：
安装过程中，因em13c 所需内存小于本地机器的本身磁盘空间，安装未果

-- 虚拟机镜像克隆过程



Oracle Enterprise Manager Cloud Control 13c Installation - Step 2 of 11

Software Updates

ORACLE Enterprise Manager Cloud Control 13c

Installation Types

Software Updates

Oracle Inventory

Prerequisite Checks

Installation Details

Configuration Details

Database Prerequisite Check

Shared Location Details

Review

Install Progress

Finish

☒ Skip

☐ Search for Updates (Prerequisites, Critical Patches, Interim Patches, Plug-ins, etc.)

☐ Local Directory

Browse...

☒ My Oracle Support (Requires Internet Connection)

User Name

Password

Search for Updates

Messages:

Help

< Back

Next >

Install

Cancel

Oracle Enterprise Manager Cloud Control 13c Installation - Step 3 of 11

Oracle Inventory

ORACLE Enterprise Manager Cloud Control 13c

Installation Types

Software Updates

Oracle Inventory

Prerequisite Checks

Installation Details

Configuration Details

Database Prerequisite Check

Shared Location Details

Review

Install Progress

Finish

This seems to be the first Oracle product that you are installing on this host. Specify an inventory directory (also called the orainventory directory) where all installer files and directories can be placed. This is a one-time activity. The installer automatically sets up subdirectories for each Oracle product that you install, to contain the inventory data. The inventory directory is different from the Oracle Home directory that is created for each Oracle product.

Inventory Location

/u01/app/orainventory

Browse...

Select the appropriate operating system group name that will own the Oracle inventory directory. The group you select must have write permissions on the Oracle inventory directory.

Operating System Group

oracle

Messages:

Help

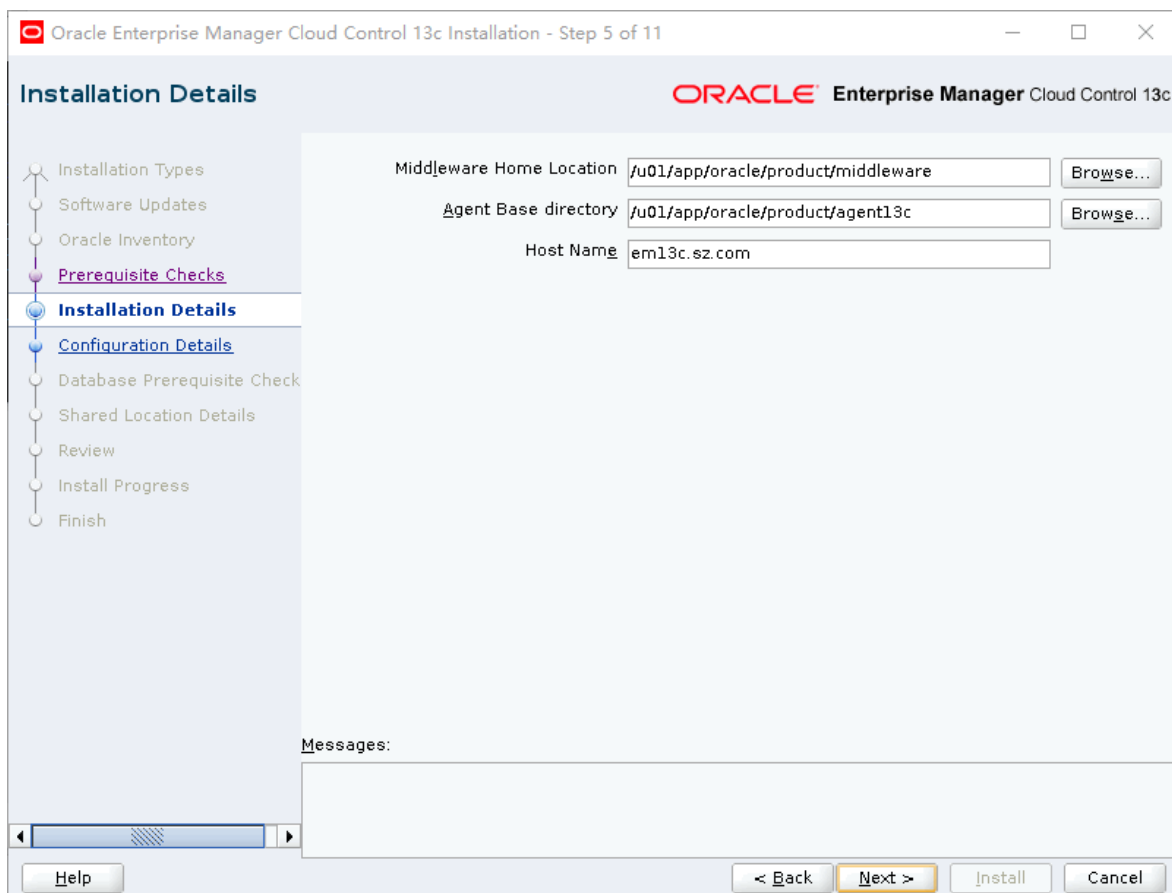
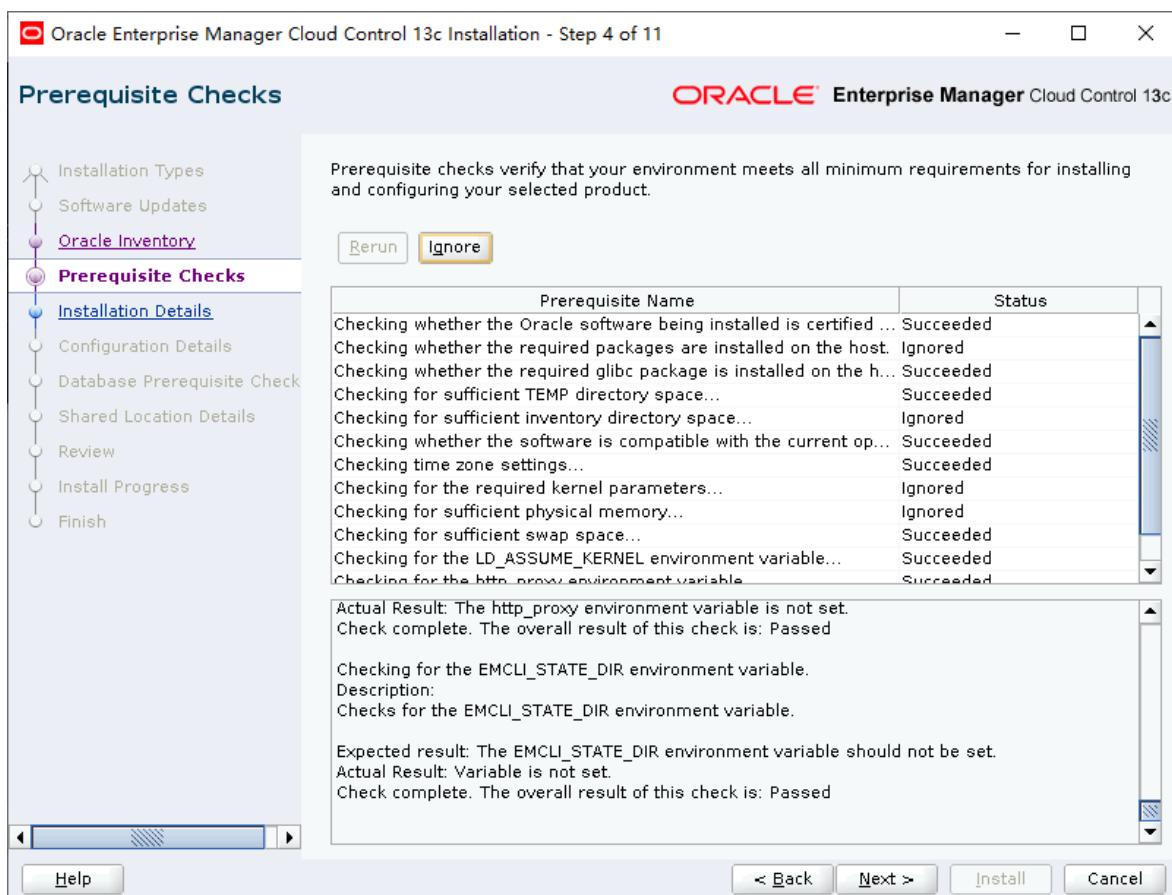
< Back

Next >

Install

Cancel

分区 新分区 1 的第 2 页



Oracle Enterprise Manager Cloud Control 13c Installation - Step 6 of 11

Configuration Details

ORACLE Enterprise Manager Cloud Control 13c

- Installation Types
- Software Updates
- Oracle Inventory
- Prerequisite Checks
- Installation Details
- Configuration Details**
- Database Prerequisite Check
- Shared Location Details
- Review
- Install Progress
- Finish

Administrator Password

Create Administrator Password:

Confirm Administrator Password:

The password is common for WebLogic Server administration, Node Manager, MDS administration, SYSMAN user account, and OMS registration. The password for each of these accounts can be changed after the installation.

Database Connection Details

Database Host Name:

Port:

Service/SID:

SYS Password:

Messages:

- Port: Enter the listener port of the database where you want to configure the Management Repository.
- Service/SID: Enter the SID or the service name of the database where you want to configure the Management Repository.

Help < Back Next > Install Cancel

Oracle Enterprise Manager Cloud Control 13c Installation - Step 6 of 11

Configuration Details

ORACLE Enterprise Manager Cloud Control 13c

- Installation Types
- Software Updates
- Oracle Inventory
- Finish

Administrator Password

Create Administrator Password:

Confirm Administrator Password:

Error

Could not connect to the database using the host and port you specified. Ensure that the host is up or that the database listener is running on that host.

OK

Port:

Service/SID:

SYS Password:

Messages:

Help < Back Next > Install Cancel

本机未装数据库，所以这一部失效
查看端口，ss -ant
-1521端口未开启

```

vi /etc/hosts
[root@em13c ~]# ss -ant
State  Recv-Q  Send-Q    Local Address:Port      Peer Address:Port Process
LISTEN 0        128          0.0.0.0:22              0.0.0.0:*
LISTEN 0       4096          0.0.0.0:111            0.0.0.0:*
ESTAB  0         0  192.168.133.128:41780    192.168.133.1:6000
ESTAB  0         0  192.168.133.128:22      192.168.133.1:5884
ESTAB  0         0  192.168.133.128:22      192.168.133.1:6093
LISTEN 0        128          [::]:22                [::]:*
LISTEN 0       4096          [::]:111                [::]:*
[root@em13c ~]#

```

Resolve:

使用dbserver上已安装的数据库进行连接

启数据库:

```

[oracle@dbserver ~]$ sqlplus / as sysdba

SQL*Plus: Release 19.0.0.0.0 - Production on Fri Dec 15 15:47:39 2023
Version 19.21.0.0.0

Copyright (c) 1982, 2022, Oracle. All rights reserved.

Connected to an idle instance.

SYS@orcl >startup
ORACLE instance started.

Total System Global Area 2365586752 bytes
Fixed Size 9166144 bytes
Variable Size 520093696 bytes
Database Buffers 1828716544 bytes
Redo Buffers 7610368 bytes
Database mounted.
Database opened.
SYS@orcl >exit
Disconnected from Oracle Database 19c Standard Edition 2 Release 19.0.0.0.0 - P
oduction
Version 19.21.0.0.0

```

查看监听

```

Uptime 0 days 0 hr. 2 min. 23 sec
Trace Level off
Security ON: Local OS Authentication
SNMP OFF
Listener Parameter File /u01/app/oracle/product/19.21/db_1/network/admin/lsn
ner.ora
Listener Log File /u01/app/oracle/diag/tnslsnr/dbserver/listener/alert
log.xml
Listening Endpoints Summary...
  (DESCRIPTION=(ADDRESS=(PROTOCOL=tcp)(HOST=dbserver)(PORT=1521)))
  (DESCRIPTION=(ADDRESS=(PROTOCOL=ipc)(KEY=EXTPROC1521)))
Services Summary...
Service "0c4b59438c6b17f3e0637885a8c04522" has 1 instance(s).
  Instance "orcl", status READY, has 1 handler(s) for this service...
Service "86b637b62fdf7a65e053f706e80a27ca" has 1 instance(s).
  Instance "orcl", status READY, has 1 handler(s) for this service...
Service "orcl" has 1 instance(s).
  Instance "orcl", status READY, has 1 handler(s) for this service...
Service "orclXDB" has 1 instance(s).
  Instance "orcl", status READY, has 1 handler(s) for this service...
Service "pdb" has 1 instance(s).
  Instance "orcl", status READY, has 1 handler(s) for this service...
The command completed successfully

```

进行连接:

Oracle Enterprise Manager Cloud Control 13c Installation - Step 6 of 11

Configuration Details

ORACLE Enterprise Manager Cloud Control 13c

- Installation Types
- Software Updates
- Oracle Inventory
- Prerequisite Checks
- Installation Details**
- Database Prerequisite Check
- Shared Location Details
- Review
- Install Progress
- Finish

Administrator Password

Create Administrator Password

Confirm Administrator Password

The password is common for WebLogic Server administration, Node Manager, MDS administration, SYSMAN user account, and OMS registration. The password for each of these accounts can be changed after the installation.

Database Connection Details

Database Host Name

Port

Service/SID

SYS Password

Messages:

Help < Back Next > Install Cancel

Oracle Enterprise Manager Cloud Control 13c Installation - Step 6 of 11

Configuration Details

ORACLE Enterprise Manager Cloud Control 13c

- Installation Types
- Software Updates
- Oracle Inventory
- Prerequisite Checks
- Installation Details**
- Database Prerequisite Check
- Shared Location Details
- Review
- Install Progress
- Finish


Administrator Password

Create Administrator Password

Confirm Administrator Password

The password is common for WebLogic Server administration, Node Manager, MDS

Error



ERROR: Exception occurred while connecting to database. Check the connection details of the database you specified and retry.

Listener refused the connection with the following error:
ORA-12514, TNS:listener does not currently know of service requested in connect descriptor

Unable to connect to the database and validate whether it is a supported database due to one of the following reasons:

- (1) Credentials may be incorrect.
- (2) Listener may be down.
- (3) Database may be down.

OK

Messages:

Help < Back Next > Install Cancel

Question:

两台机器未连通

Resolve:

配置免密登录 (em13c可免密访问dbserver)

在dbserver上生成公钥与私钥，将私钥发送到em13c此机器下
两台机器重启sshd服务

```
[oracle@dbserver ~]$ ssh-keygen -t rsa
Generating public/private rsa key pair.
Enter file in which to save the key (/home/oracle/.ssh/id_rsa):
Created directory '/home/oracle/.ssh'.
Enter passphrase (empty for no passphrase):
Enter same passphrase again:
Your identification has been saved in /home/oracle/.ssh/id_rsa
Your public key has been saved in /home/oracle/.ssh/id_rsa.pub
The key fingerprint is:
SHA256:ya8DVT41YGfbhdWE+LxQ3IprzixSTf6LPMQg/aY7QJM oracle@dbserver
The key's randomart image is:
+---[RSA 3072]-----+
|      .  o.o  *=|
|      . o..o+o=.o|
|      o * ..*..|
|      E...O + + |
|      . oSO + + .|
|      o ..B + . |
|      o o.*      |
|      =.. +      |
|      .+ .      |
+----[SHA256]-----+
[oracle@dbserver ~]$ ll
total 0
[oracle@dbserver ~]$ cd ~/.ssh
[oracle@dbserver .ssh]$ ll
total 8
-rw----- 1 oracle oinstall 2602 Dec 15 15:56 id_rsa
-rw-r--r-- 1 oracle oinstall 569 Dec 15 15:56 id_rsa.pub
```

```
[oracle@dbserver ~]$ service sshd restart
Redirecting to /bin/systemctl restart sshd.service
==== AUTHENTICATING FOR org.freedesktop.systemd1.manage-units ====
Authentication is required to restart 'sshd.service'.
Authenticating as: root
Password:
==== AUTHENTICATION COMPLETE ====
```

```
[root@em13c .ssh]# cp id_rsa.pub authorized_keys
[root@em13c .ssh]# ll
total 8
-rw-r--r-- 1 root root 569 Dec 15 16:10 authorized_keys
-rw-r--r-- 1 root root 569 Dec 15 16:09 id_rsa.pub
[root@em13c .ssh]# service sshd restart
Redirecting to /bin/systemctl restart sshd.service
[root@em13c .ssh]# ssh dbserver
The authenticity of host 'dbserver (192.168.133.120)' can't be established.
ED25519 key fingerprint is SHA256:iprQOYXUC3g8q6XK1X9spB92w07hhLCP2EDgUZyRdeo.
This key is not known by any other names
Are you sure you want to continue connecting (yes/no/[fingerprint])? y
Please type 'yes', 'no' or the fingerprint: y
Please type 'yes', 'no' or the fingerprint: yes
Warning: Permanently added 'dbserver' (ED25519) to the list of known hosts.
root@dbserver's password:
Activate the web console with: systemctl enable --now cockpit.socket

Last login: Fri Dec 15 15:37:28 2023 from 192.168.133.1
[root@dbserver ~]# history
```

再次验证:

Oracle Enterprise Manager Cloud Control 13c Installation - Step 6 of 11

Configuration Details

ORACLE Enterprise Manager Cloud Control 13c

- Installation Types
- Software Updates
- Oracle Inventory
- Prerequisite Checks
- Installation Details**
- Database Prerequisite Check
- Shared Location Details
- Review
- Install Progress
- Finish

Administrator Password

Create Administrator Password:

Confirm Administrator Password:

The password is common for WebLogic Server administration, Node Manager, MDS administration, SYSMAN user account, and OMS registration. The password for each of these accounts can be changed after the installation.

Database Connection Details

Database Host Name:

Port:

Service/SID:

SYS Password:

Messages:

Help < Back Next > Install Cancel

Oracle Enterprise Manager Cloud Control 13c Installation - Step 6 of 11

Configuration Details

ORACLE Enterprise Manager Cloud Control 13c

- Installation Types
- Software Updates
- Oracle Inventory
- Prerequisite Checks
- Installation Details**
- Database Prerequisite Check
- Shared Location Details
- Review
- Install Progress
- Finish

Administrator Password

Create Administrator Password:

Confirm Administrator Password:

The password is common for WebLogic Server administration, Node Manager, MDS

Error

ERROR: Exception occurred while connecting to database. Check the connection details of the database you specified and retry.

ORA-01017: invalid username/password; logon denied

Unable to connect to the database and validate whether it is a supported database due to one of the following reasons:

- (1) Credentials may be incorrect.
- (2) Listener may be down.
- (3) Database may be down.

OK

Messages:

Help < Back Next > Install Cancel

Question:

如上图

Cause:

oracle用户无root权限

Resolve:

将 \$3 的值改为0, 可实现oracle用户拥有root权限


```
sztech:x:1000:1000:sztech:/home/sztech:/bin/bash
oracle:x:1001:0::/home/oracle:/bin/bash
grid:x:1002:1006::/home/grid:/bin/bash
rpc:x:32:32:Rpcbind Daemon:/var/lib/rpcbind:/sbin/rpcbind
rpcuser:x:29:29:RPC Service User:/var/lib/nfs:/sbin/rpcbind
"/etc/passwd" 41L, 2299B
```

再次登陆

Oracle Enterprise Manager Cloud Control 13c Installation - Step 6 of 11

Configuration Details

ORACLE Enterprise Manager Cloud Control 13c

- Installation Types
- Software Updates
- Oracle Inventory
- Prerequisite Checks

Administrator Password

Create Administrator Password:

Confirm Administrator Password:

The password is common for WebLogic Server administration, Node Manager, MDS

Error

ERROR: Exception occurred while connecting to database. Check the connection details of the database you specified and retry.

ORA-01017: invalid username/password; logon denied

Unable to connect to the database and validate whether it is a supported database due to one of the following reasons:

- (1) Credentials may be incorrect.
- (2) Listener may be down.
- (3) Database may be down.

OK

Messages:

Help < Back Next > Install Cancel